

## iBoardTouch DigiClass Quick Start Guide

### Network Requirements

DigiClass is designed to work in a classroom/meeting room environment with the Teacher at the board and Students on devices/laptops.

The optimal set up is for the board to be wired, but so long as the wifi is strong enough and stable a wifi connection should work fine.

The main factor in the maximum number of devices that can connect is the network.

DigiClass uses the following ports and protocols:

UDP broadcast on 255.255.255.255

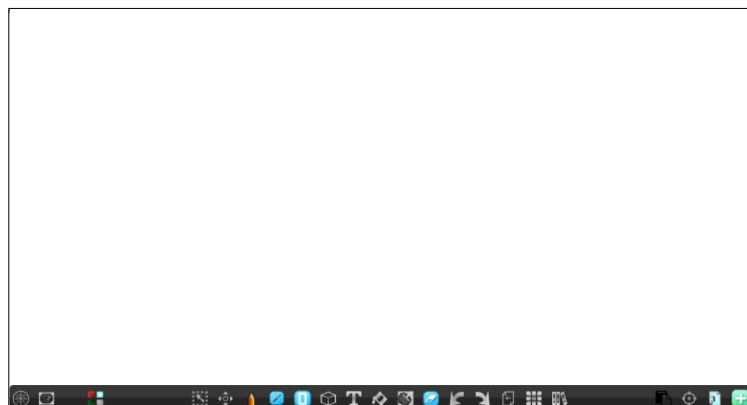
UDP 63000, 63002

TCP 63001

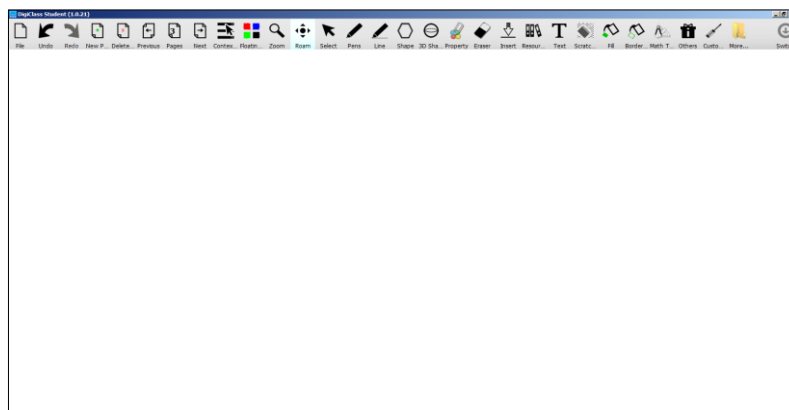
### A Word About The “Mode”

Like IWBPro, DigiClass gives users a choice between two type of UI, one called “Classic Mode” and the other called “Modern Mode”.

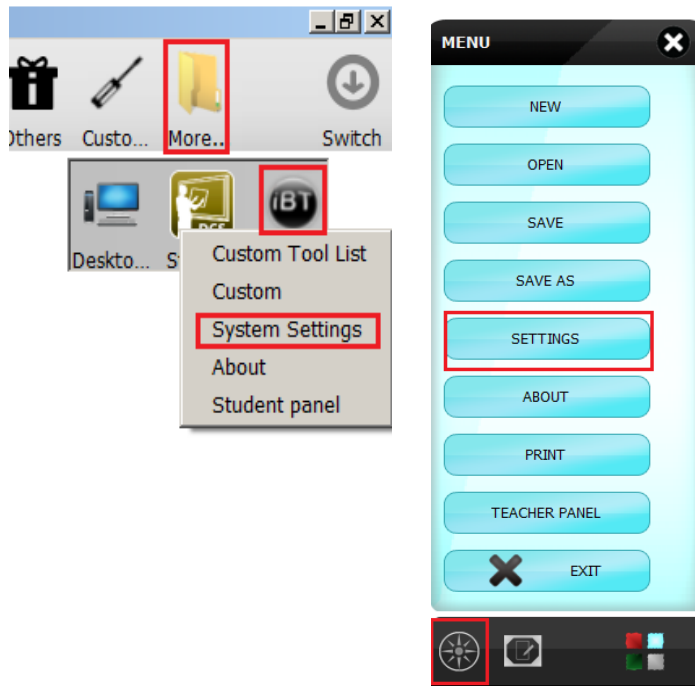
Modern Mode looks like this:



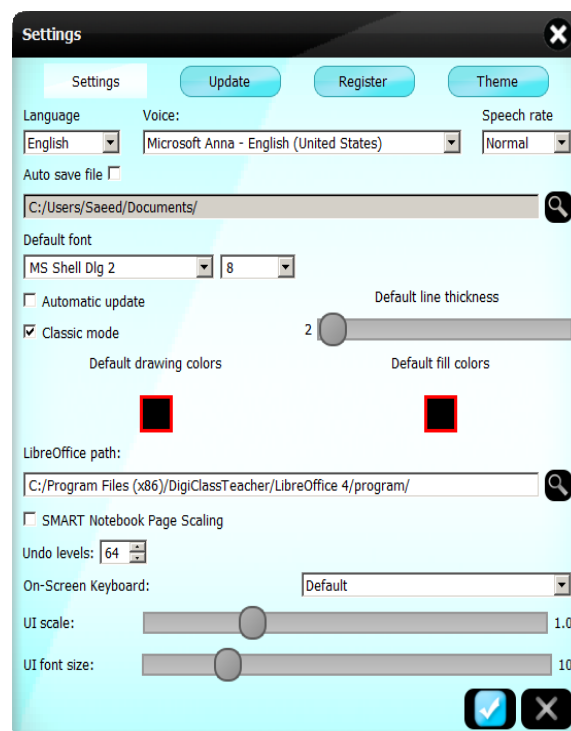
Classic Mode look like this:



Switching between the two is done via the “Settings” dialogue, which accessed as follows in Classic (left) and Modern (right):



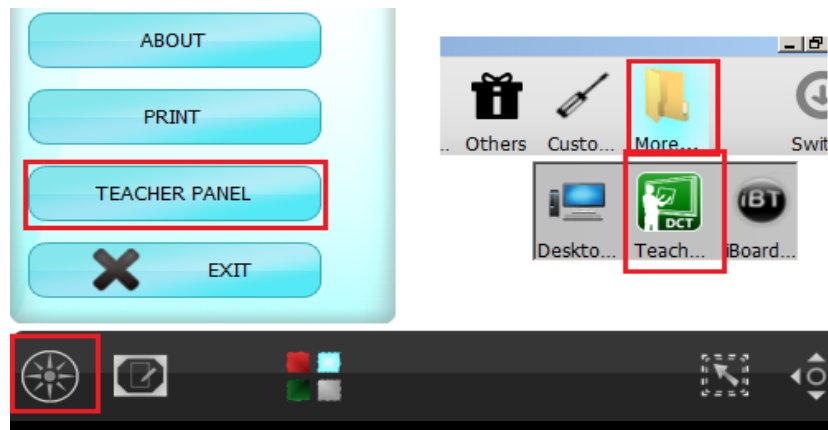
Classic Mode is enabled by ticking the “Classic mode” box as below:



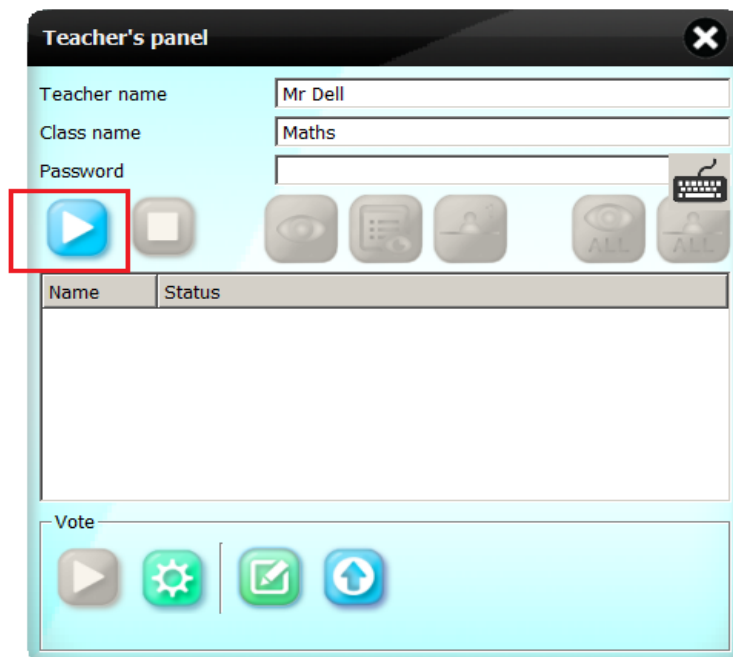
The Modern mode is recommended because it is designed for easier use with tablets.

## Starting A Class

Start the DigiClass Teacher application on the board and open the Teacher Panel (Modern and Classic methods shown):



The Teacher Panel appears:



Enter the Teacher Name and Class Name. The Password is optional.  
Then click the blue start button to start the class broadcast.  
The Teacher Panel then changes to the following:

Teacher's panel

Teacher name

Mr Dell

Class name

Maths

Password

Name	Status
------	--------

Vote

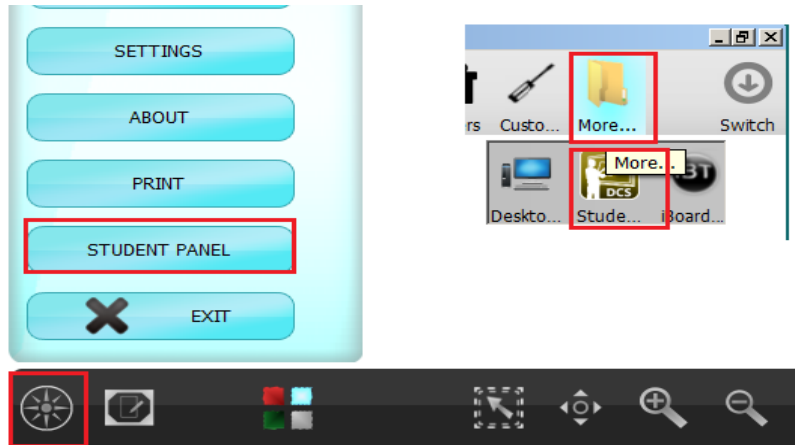
The red Stop button is now enabled to allow the class to close.

The student can now join the class.

## Joining The Class

The student on their devices/laptops will now start DigiClass Student (ensure they are connected to the same network).

Open the Student Panel:



The Student Panel appears:

The screenshot shows a window titled "Student's panel" with a close button (X) in the top right corner. It contains the following fields and elements:

- Student name:
- Class password:
- Available classes:

Status	Class name	Teacher name
Active	Maths	Mr Dell

At the bottom of the panel, there is a blue button with a white checkmark and a grey button with a white 'X'. Below these buttons, the text "Not in any class" is displayed.

The Student (providing the network connections are sound) should be able to see the classes running in the list. To join a class, the student enter their name (and password if the teacher specified a password), then selects the class from the list and then clicks the blue tick/join button, and the student panel status changes as follows:

Student's panel

Student name

Adam

Class password

Available classes:

Status	Class name	Teacher name
Active	Maths	Mr Dell

✓

✗

Joined class Maths

The teacher will see the following in the Teacher Panel:

Teacher's panel

Teacher name

Mr Dell

Class name

Maths

Password

▶

◻

👁

📋

👤

👁 ALL

👤 ALL

Name	Status
Adam	Watching

Vote

▶

⚙

✍

⬆

Each student who needs to join the class will repeat the same steps.

Once joined, the teacher can write on the canvas and what he writes will appear on the student devices:

hello

$$1+1=$$

Teacher's panel

Teacher name: Mr Dell

Class name: Maths

Password:

Buttons: Play, Stop, Previous, Next, Home, End, Refresh, Repeat

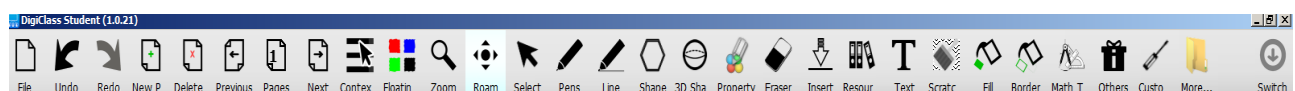
Name	Status
Adam	Watching

Vote:

Buttons: Play, Settings, Checkmark, Refresh



Student:



hello

$$1+1=$$

Student's panel

Student name: Adam

Class password:

Available classes:

Status	Class name	Teacher name
Active	Maths	Mr Dell

Buttons: Checkmark, X

Joined class Maths

Depending on resolution differences the scaling may differ from device to device.

When the students are in Watching mode the only action they can perform is to zoom in/out and roam.

## Selecting A Student To Present

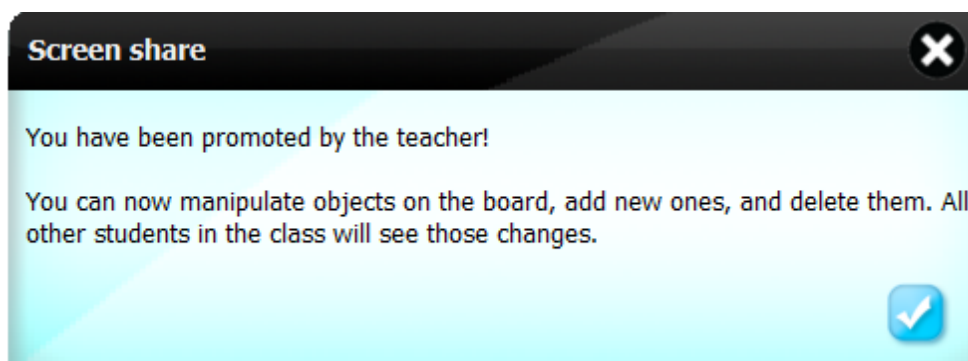
In the above example the teacher has written a simple maths question. To ask the student to write the answer the teacher selects the student from the list and clicks on the “Present” button:



When clicked, the teacher will be asked whether he want to save the current state of the document.

For testing click “No” to continue.

The selected student will see the following message box:



The teacher panel will now show the student status as “Presneting”:




**Teacher's panel** [X]

Teacher name:

Class name:

Password:









Name	Status
Adam	Presenting

Vote:






The student can now select a tool and draw on the canvas:

hello

$1+1=2$



**Student's panel** [X]

Student name:

Class password:

Available classes:

Status	Class name	Teacher name
Active	Maths	Mr Dell

Joined class Maths

This will be seen on all the other devices and the teachers board.

### Setting Student Back To Watching

To set the student back to watching, the teacher selects the student and then clicks on “Watch”:

**Teacher's panel** [X]

Teacher name:

Class name:

Password:

[Play] [Stop] [Eye] [List] [Person] [Eye ALL] [Person ALL]

Name	Status
Adam	Presenting

Vote: [Play] [Gear] [Checkmark] [Up Arrow]

This message will appear on the teachers board:

**Restore document?** [X]

Do you want to restore the document you had been working on before you have started the screen share?

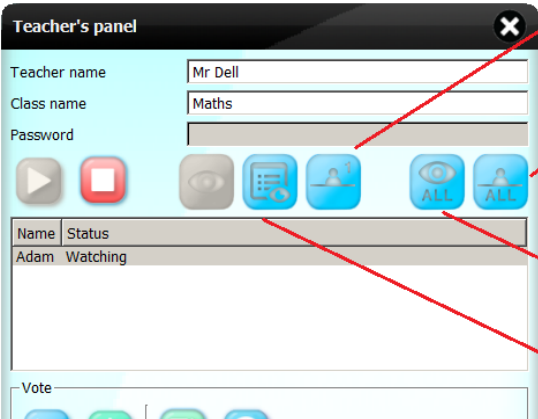
[Yes] [No]

Clicking “Yes” (the blue tick) causes the document to revert back to the state it was in before the student made changes, clicking “No” (the cross) keeps the changes.

For testing keep the changes.

## Other Class Control Options

The teacher has the following options available to control student activities:



The screenshot shows the 'Teacher's panel' interface. It includes fields for 'Teacher name' (Mr Dell), 'Class name' (Maths), and 'Password'. Below these are several icons: a play button, a red square, a camera, a document, a person, and two blue buttons labeled 'ALL'. A table below the icons shows student names and their status. The table has two columns: 'Name' and 'Status'. The first row shows 'Adam' and 'Watching'. Below the table is a 'Vote' section.

Annotations with red arrows point to specific icons and the table:

- Work alone - select a single student to work alone** (points to the person icon)
- All Work Alone - all students work alone on the assignment** (points to the 'ALL' button with a person icon)
- All Watch - all students (working alone, presenting) are set to watch** (points to the 'ALL' button with an eye icon)
- Present - select a single student to present.** (points to the table)

## Voting Panel

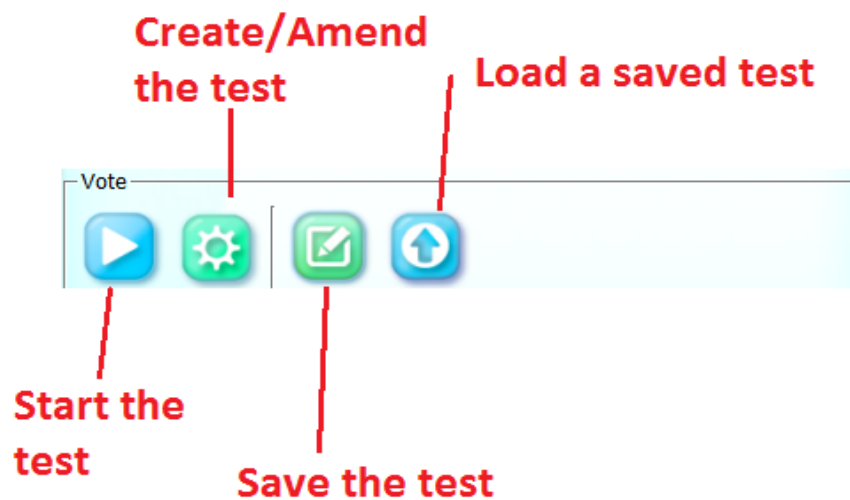
Another feature of DigiClass is the Voting Panel. This allows tests and surveys to be conducted and the results collated. Tests are a set of questions which can either be multiple choice and free text answers. The tests can be saved, and completed tests with answers by all students can also be saved for review.

### Create A Test/Survey

The teacher can create a test or survey separately from a class, i.e. a class does not have to be started.

To create a test, open the Teacher panel.

The bottom half has the Voting Panel controls:



Click the Create test button:

A screenshot of the 'Vote settings' dialog box. It has a black title bar with a close button (X). The main area is light blue. It contains a 'Name:' label followed by a text input field containing 'Citizenship'. Below that is a 'Timeout:' label followed by a text input field containing '600' and the word 'seconds'. A green button with a white plus sign is located at the bottom right.

Enter the test name, and set the time limit (defaults to 600 seconds).

To add questions click the green “+” button and select the number of questions.

The questions can then be set:

**Vote settings**

Name:

Timeout:  seconds +

---

Question:

Type: ☒ Multi-choice ☐ Assessed

+
×

Answer 1

Answer 2

Answer 3

---

Question:

Type: ☒ Multi-choice ☐ Assessed

✎
↑
×
✖

Set the questions as required. Within each question click the green “+” button to add more choices, click the blue cross to remove options.

Once completed, the buttons at the bottom give the following options:



The Save button opens the file save dialogue allowing the questions to be saved (for loading later).

The Load button allows previously saved tests to be opened.

Clear deletes all the questions currently opened and Close closes this window.

## Running The Test

Once the questions have been set, click the blue play button to start the test:



The students will now see the following window pop-up:

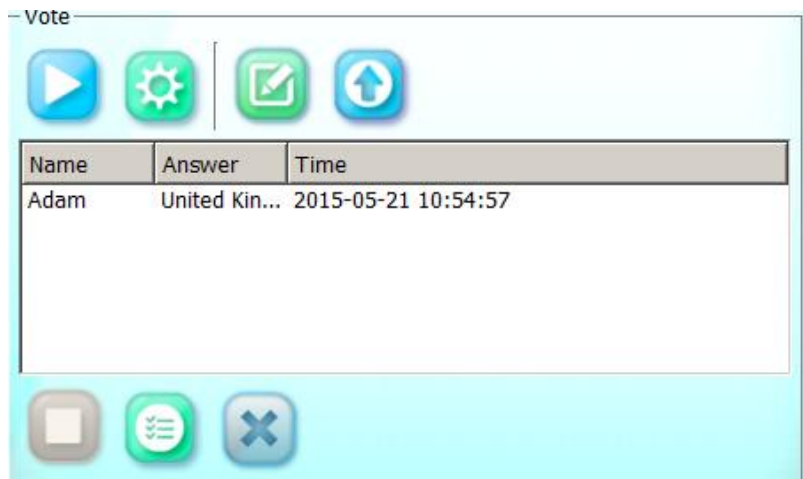
A screenshot of a 'Cast your vote' pop-up window. The window has a black title bar with a close button (X). The main content area is light blue and contains three questions, each with three radio button options. The first question is 'What does "UK" stand for?' with options 'Union Kinship' (selected), 'United Kingdom', and 'Ultra Kingdom'. The second question is 'Who is the Head of State' with options 'The Prime Minister' (selected) and 'The Queen'. The third question is 'What is the name given to the British flag' with options 'United John' (selected) and 'Union Jack'. At the bottom of the window, there are two buttons: a blue button with a white checkmark and a red button with a white X. A blue arrow points to the bottom right corner of the window.

The students have until the preset timeout to complete the questions and submit their answers.

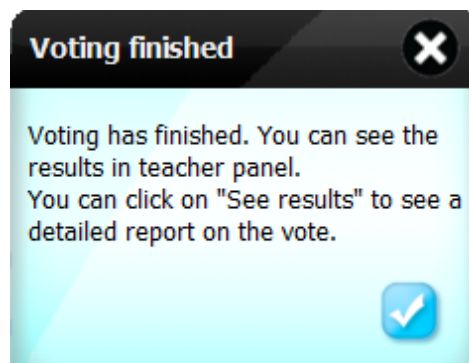
The blue tick button submits the answers.

The red cross cancels the test.

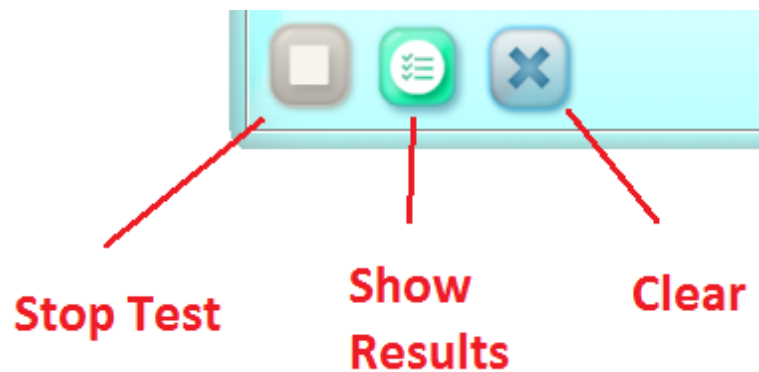
As each student completes, the teacher panel shows this in the notification list:



When all students have submitted, the following notification appears:



The teacher can now click the “Preview” (Show Results) button to show the results:



The vote results panel appears:

## Vote results



Results for vote: Citizenship

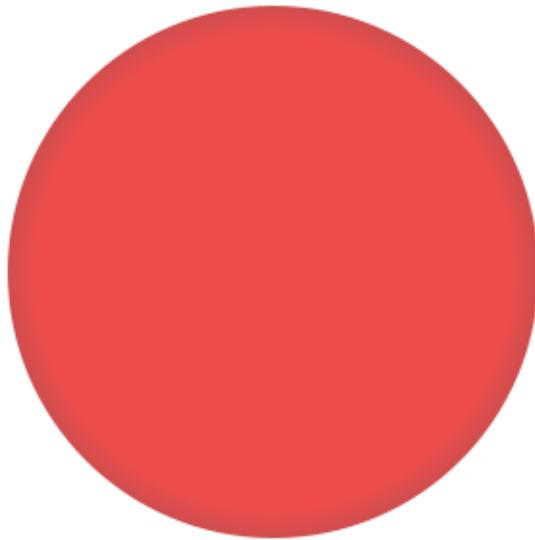
Student list

Question list

What does "UK" stand for?  
Who is the Head of State  
What is the name given to the British flag



Question: What does "UK" stand for?



United Kingdom

Question: Who is the Head of State



## English Comprehension Example

The following is an example showing how the Voting Panel can be used for an English Comprehension test.

The class is started and students join.

The teacher has imported a short passage from a Word document.

The teacher has also prepared a comprehension test based on the passage:

### English Comprehension - My Family

My name is Jack, and I live with my mum and dad, and two sisters.

We live in a second floor flat in East London, not far from West Ham United's ground.

The flat is a little small for all of us, but it is clean, comfortable and homely.

My mum works as a shop assistant in a nearby market. She works between 10a and 4p a week, so she is always home before and after school.

Dad works as a postman, so he is up early to go to work, but is often home by 5pm to be with both parents after school.

Mum and dad takes turns to cook, but we always all eat together.

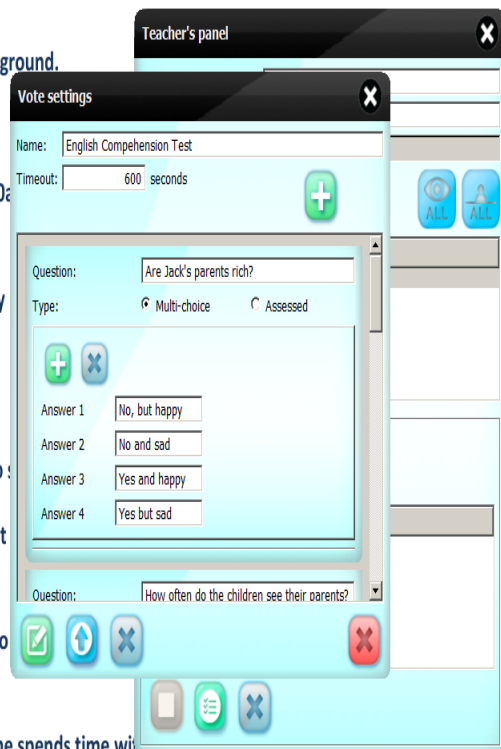
My sisters are younger than me, but we all go the same school so we travel to school together.

At the weekends we tend to help mum and dad on Saturday mornings, so that we can be together the rest of the weekend.

I like to play & watch football with my dad, but we can't always afford to go to the stadium. We all like to go for walks into town when we can.

Mum and my sisters are not interested in football, so dad likes to make sure he spends time with them too so we all have time together at the weekend.

I enjoy seeing the people in town as we walk along, wondering what their lives are like, and whether anyone I see is any happier than we are as a family. Mum always says that the simple



The students can read the passage and answer the questions.

Once submitted the teacher can review the answers with the class:



The teacher can then select a student's answer and ask the student to show why he thought that by passing presenter control to that student.

The student can then mark using the highlighter the excerpts that helped with decide the answer:

#### English Comprehension - My Family

My name is Jack, and I live with my mum and dad, and two sisters.

We live in a second floor flat in East London, not far from West Ham United's ground.

The flat is a little small for all of us, but it is clean, comfortable and homely.

My mum works as a shop assistant in a nearby market. She works between 10am and 4pm a week, so she is always home before and after school.

Dad works as a postman, so he is up early to go to work, but is often home by 3pm so we can be with both parents after school.

Mum and dad takes turns to cook, but we always all eat together.

My sisters are younger than me, but we all go the same school so we travel to school together.

At the weekends we tend to help mum and dad on Saturday mornings, so that we can all relax together the rest of the weekend.

I like to play & watch football with my dad, but we can't always afford to go to watch West Ham. We all like to go for walks into town when we can.

Mum and my sisters are not interested in football, so dad likes to make sure he spends time with them too so we all have time together at the weekend.

I enjoy seeing the people in town as we walk along, wondering what their lives are like, and whether anyone I see is any happier than we are as a family. Mum always says that the simple

